

TIIG
INJURY SURVEILLANCE IN THE NORTH WEST OF ENGLAND

Royal Preston Hospital Emergency Department

Monthly Bulletin: October 2012 to September 2013

This bulletin provides a breakdown of all injury attendances to Royal Preston Hospital Emergency Department (ED) between October 2012 and September 2013.

During this twelve month period there were 29,186 attendances to Royal Preston Hospital ED. The month with the largest number of presentations was July 2013 with 2,755 attendances (**Figure 1**).

There were more male than female attendees, with males accounting for 55% of all injury attendances (males=16,150) (**Figure 1**).

Figure 2 illustrates the age group of ED attendances for each month. The highest proportions of attendances were for persons aged 30-59 (n=8,758; 30%) and 15-29 years (n=8,062; 28%).

The injury group of attendances to the ED are detailed in **Table 1**. Two-fifths (40%) of attendances were categorised in the falls injury group (n=11,661) with a similar proportion (37%) recorded as other injury (n=10,661). Sports injury accounted for 10% of attendances (n=2,820), road traffic collisions 8% (n=2,464) and assaults 5% (n=1,374).

Table 2 shows the location of incident for patients attending Royal Preston Hospital ED. The primary incident location was in the home where over a third (34%) of injuries occurred (n=9,926). Almost a quarter (24%) of injuries occurred in a public place (n=7,114).

The discharge destination for injury attendances is indicated in **Table 3**. The majority (60%) of

attendances were discharged with no follow-up treatment required. Twelve per cent were referred to the fracture clinic (n=3,413), 9% admitted into hospital (n=2,572) and 7% were discharged into the care of their General Practitioner (GP) (n=2,095).

Assault attendances

Between October 2012 and September 2013 there were 1,374 assault-related injury attendances to Royal Preston Hospital ED. The months with the largest number of presentations were October and November 2013, with each month receiving 129 patients (**Figure 3**).

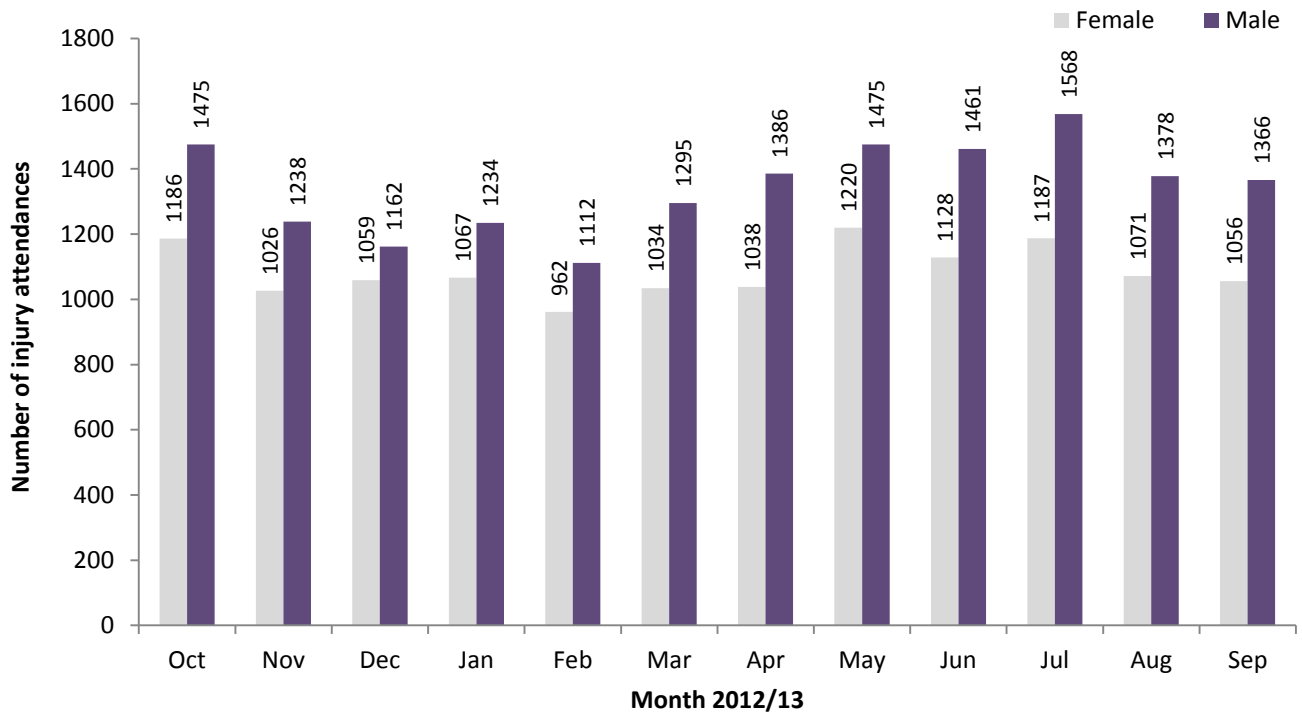
The majority (74%) of assault attendees to the ED were male (males=1,015). (**Figure 3**).

Table 4 details the age group of assault attendances for each month. Over half (56%) were aged 15-29 years (n=775) and almost two-fifths (38%) were aged 30-59 years (n=519).

The incident location for assault attendances to Royal Preston Hospital ED is shown in **Table 5**. Half (50%) of assault attendances occurred in a public place (n=689). Fifteen per cent took place in the home (n=201) followed by 14% recorded as other location (n=186) and 9% in a public building (n=117).

Table 6 illustrates the discharge destination for assault attendees. Over half (54%) of assault attendees were discharged with no follow-up treatment required (n=737). A quarter (25%) required follow-up treatment (n=346) and 9% were admitted into hospital (n=128).

Figure 1: Gender of ED injury attendances by month, October 2012 to September 2013



* There were two attendances where the gender was unknown.

Figure 2: Percentage of ED injury attendances by age group and month, October 2012 to September 2013

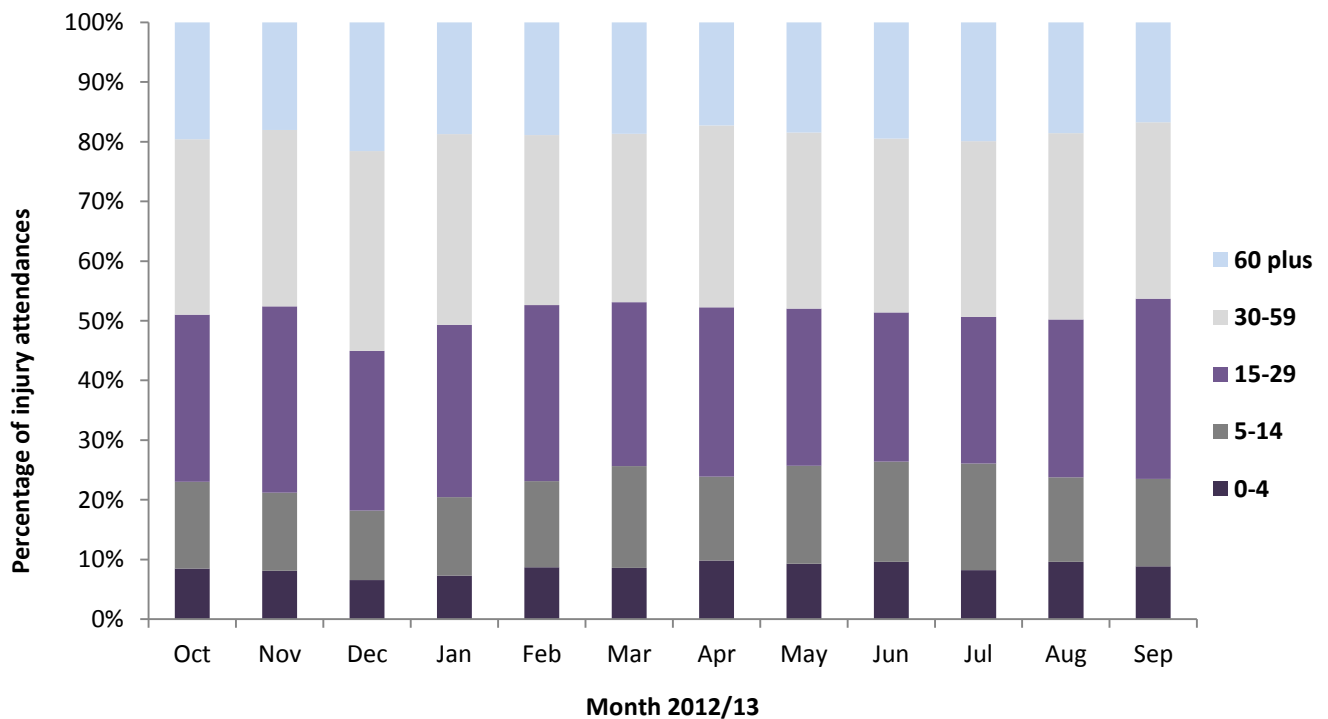


Table 1: ED injury attendances by injury group and month, October 2012 to September 2013*

Injury group	Oct	Nov	Dec	Jan	Feb	Mar	Apr	May	Jun	Jul	Aug	Sep	Total	%
Fall	978	855	930	968	867	893	922	1063	1056	1161	1038	930	11661	40
Other injury	971	788	812	834	685	836	938	990	1012	1049	915	831	10661	37
Sports injury	297	219	142	188	235	291	230	259	217	218	190	334	2820	10
RTC	278	251	191	176	182	199	217	240	168	187	182	193	2464	8
Assault	129	129	127	110	94	97	100	127	122	124	105	110	1374	5
Deliberate self-harm	9	22	19	25	11	13	17	16	14	16	19	25	206	1
Total	2662	2264	2221	2301	2074	2329	2424	2695	2589	2755	2449	2423	29186	100

* Due to low numbers, firework injuries have been included in the 'other injury' category (n=5).

Table 2: ED injury attendances by incident location and month, October 2012 to September 2013^{1,2}

Location	Oct	Nov	Dec	Jan	Feb	Mar	Apr	May	Jun	Jul	Aug	Sep	Total	%
Home	873	773	860	842	698	826	831	866	834	945	818	760	9926	34
Public place	670	575	575	543	511	504	583	633	637	730	632	521	7114	24
Sport	279	201	133	170	221	251	217	257	199	231	213	300	2672	9
Work	249	227	186	223	195	184	241	229	210	194	225	236	2599	9
Other	209	168	197	223	154	188	240	277	253	195	231	245	2580	9
Educational establishment	184	147	105	153	132	214	94	147	127	128	9	142	1582	5
Home - other persons	52	45	49	51	40	46	55	77	53	61	68	49	646	2
Garden	32	22	14	6	24	22	50	76	108	113	92	42	601	2
Public building	36	51	63	25	37	26	36	24	33	22	33	29	415	1
Holiday	23	17	6	21	14	22	22	39	45	50	58	57	374	1
Public park/playground	22	12	13	11	22	23	27	38	37	53	45	12	315	1
Nursery	12	***	***	11	12	5	12	12	18	12	7	10	117	0
Hospital	8	9	7	11	***	6	***	9	11	6	6	7	87	0
Prison	***	5	8	<10	8	9	7	<10	9	***	5	7	79	0
Special event	7	***	***	***	***	***	***	***	8	9	<10	***	52	0
Public transport	0	5	0	0	***	***	***	0	<10	0	***	***	19	0
Bus station	***	0	***	0	0	0	***	0	***	***	0	0	8	0
Total	2662	2264	2221	2296	2076	2332	2424	2695	2589	2755	2449	2423	29186	100

Table 3: ED injury attendances by discharge destination and month, October 2012 to September 2013^{1,3}

Discharge destination	Oct	Nov	Dec	Jan	Feb	Mar	Apr	May	Jun	Jul	Aug	Sep	Total	%
Discharged - no follow-up	1456	1310	1328	1438	1292	1423	1439	1629	1540	1676	1540	1488	17559	60
Fracture clinic	324	250	252	258	227	264	280	346	334	324	266	288	3413	12
Admitted RPH	203	225	216	172	198	196	196	218	218	274	234	222	2572	9
Discharged - follow-up by GP	370	166	165	160	131	161	178	162	180	150	145	127	2095	7
Other	72	80	58	53	54	55	67	83	79	86	70	55	812	3
Left before being treated	69	71	49	59	34	70	92	93	58	81	37	57	770	3
ED Clinic	55	54	61	43	50	65	60	59	67	62	49	70	695	2
Outpatient clinic	57	59	53	58	55	42	66	56	64	52	57	67	686	2
Other healthcare professional	37	36	28	52	23	39	36	36	41	36	37	34	435	1
Left having refused treatment	8	9	7	***	5	<15	5	***	***	5	7	11	78	0
Transferred to other HCP	6	***	0	***	***	0	***	8	***	<10	***	***	36	0
Police custody	***	***	***	***	***	***	***	***	***	***	***	***	<35	0
Admitted CDGH	***	0	***	0	0	0	0	0	0	0	0	0	***	0
Total	2662	2264	2221	2301	2074	2329	2424	2695	2589	2755	2449	2423	29186	100

Assaults

Table 4: ED assault attendances by age group and month, October 2012 to September 2013*¹

Age group	Oct	Nov	Dec	Jan	Feb	Mar	Apr	May	Jun	Jul	Aug	Sep	Total	%
5-14	<15	***	***	***	***	<10	6	<10	***	<10	<10	***	56	4
15-29	72	85	78	60	57	49	57	70	69	62	57	59	775	56
30-59	43	40	43	46	33	41	37	48	48	53	42	45	519	38
60 plus	***	***	***	***	***	***	0	***	***	***	***	***	22	2
Total	129	129	127	110	94	97	100	127	122	124	105	110	1374	100

* There were two assault attendances in the 0-4 age group; these have been included in the total figure.

¹ Please note that all numbers less than five have been suppressed (with ***) in line with patient confidentiality. If there is only one number less than five in a category then two numbers will be suppressed to prevent back calculations from totals.

² Educational establishment includes: educational establishment; school; school - other; school playground; and, school sport. Public place includes: public place; and, playing out. Public building includes: public building; pub/club/bar – inside; and, pub/club/bar – outside.

³ Admitted to CDGH includes: admitted; admitted to Chorley and South Ribble Hospital (CDGH); and, admitted to Healey/Yarrow Ward. Admitted to RPH includes: admitted to Royal Preston Hospital (RPH); and, admitted to the Avondale Unit. Other includes: primary care; other; dead on arrival; and, died in department. HCP = Health care provider.

Figure 3: Number of ED assault attendances by gender and month, October 2012 to September 2013

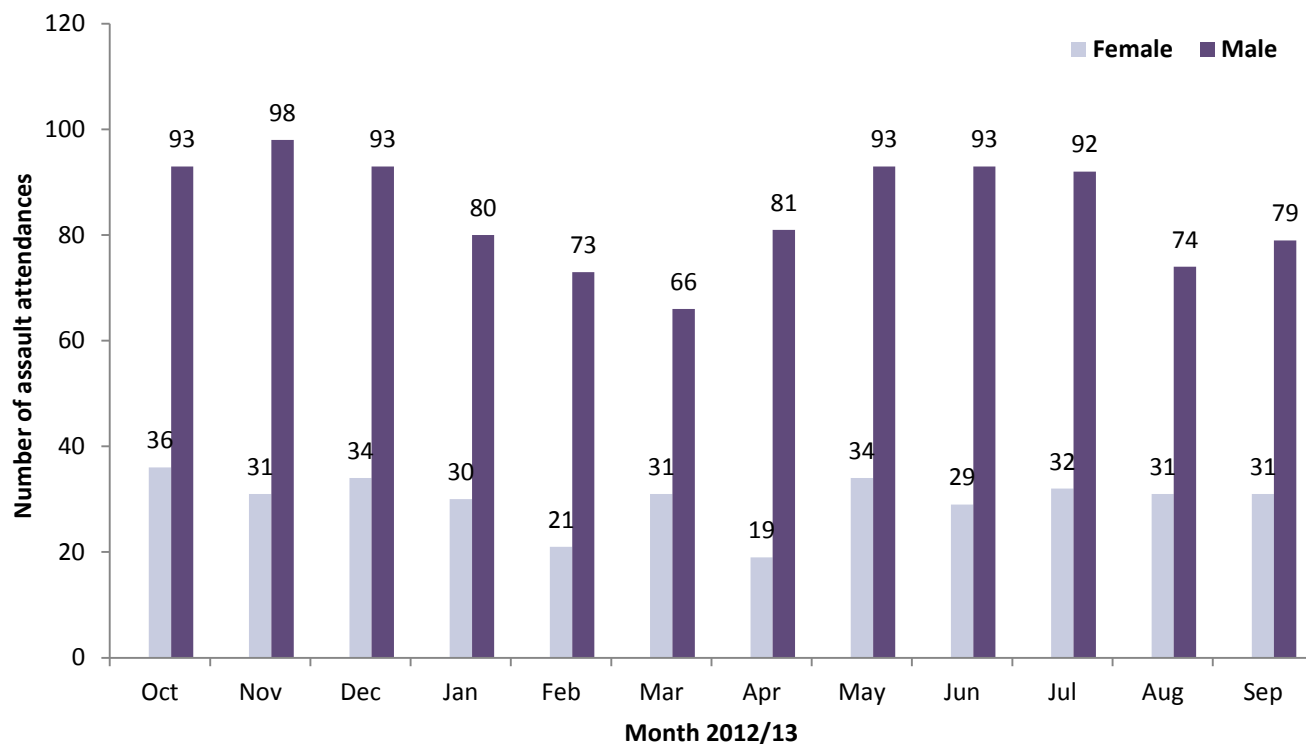


Table 5: ED assault attendances by incident location and month, October 2012 to September 2013^{4,5}

Location	Oct	Nov	Dec	Jan	Feb	Mar	Apr	May	Jun	Jul	Aug	Sep	Total	%
Public place	57	57	60	42	56	38	56	70	67	72	48	66	689	50
Home	24	20	16	18	9	22	15	15	22	13	17	10	201	15
Other	19	17	22	27	6	14	16	16	12	8	12	17	186	14
Public building	10	15	15	5	12	11	5	6	9	11	13	5	117	9
Work	***	13	***	6	***	5	***	7	5	8	***	5	66	5
Home – other persons	5	***	***	5	***	***	***	5	***	***	5	***	34	2
Prison	***	***	***	***	***	***	***	***	***	***	***	***	30	2
Educational establishment	***	***	***	***	***	***	0	***	***	***	0	***	24	2
Public park/playground	***	0	***	***	***	***	0	***	***	***	***	0	15	1
Holiday	0	0	0	***	0	0	0	0	0	***	0	***	***	0
Garden	***	0	0	0	0	0	0	0	0	***	0	0	***	0
Sport	0	0	***	0	0	0	0	0	0	0	***	***	***	0
Bus station	0	0	***	***	0	0	0	0	0	0	0	0	***	0
Hospital	0	0	***	***	0	0	0	0	0	0	0	0	***	0
Total	129	129	127	110	94	97	100	127	122	124	105	110	1374	100

Table 6: ED assault attendances by discharge destination and month, October 2012 to September 2013*

Disposal	Oct	Nov	Dec	Jan	Feb	Mar	Apr	May	Jun	Jul	Aug	Sep	Total	%
Discharged	61	68	69	67	57	47	54	69	56	66	59	64	737	54
Follow-up	34	31	37	28	21	27	26	32	34	29	22	25	346	25
Other	19	16	12	8	8	16	10	18	18	13	13	11	162	12
Admitted	15	14	9	7	8	7	10	8	14	16	10	10	128	9
Total	129	129	127	110	94	97	100	127	122	124	105	110	1374	100

*There was one attendance where the discharge was recorded as 'died in department'; this has been included in the total figure.

Published October 2013

Karen A Critchley (née Swarbrick) – TIIG Researcher/Analyst

Centre for Public Health, Faculty of Education, Health and Community, Liverpool John Moores University,
2nd Floor, Henry Cotton Building, Liverpool L3 2ET

T: 0151 231 4498 | E: K.A.Swarbrick@ljmu.ac.uk | W: www.tiig.info and www.cph.org.uk

(Please note data requests should be made through the TIIG website)

⁴ Please note that all numbers less than five have been suppressed (with ***) in line with patient confidentiality. If there is only one number less than five in a category then two numbers will be suppressed to prevent back calculations from totals.

⁵ Educational establishment includes: educational establishment; school; school - other; school playground; and, school sport. Public place includes: public place; and, playing out. Public building includes: public building; pub/club/bar – inside; and, pub/club/bar – outside.